

Geotra



GEARWORKS, a.s.



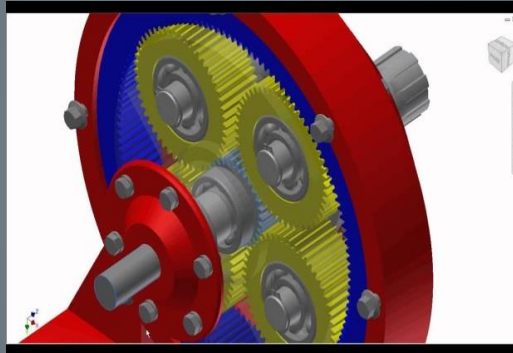
SPUR



BEVEL



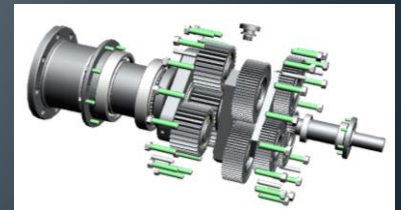
PLANETARY



WORM



SEMI



- IN-put Power 0,5 kW till 3 800 kW
- Own design, 3D models → SOLID EDGE
- Manufactur standards: DIN 3990, ISO 6336, AGMA 2001

Gearboxes for:

- **Steel mills**
- **Rolling mills**
- **Cooking plants**
- **Blast furnaces**



Gearbox for skip hoist



- **Weight: 19 230 kg**
- **IN-put: 2 x 560 kW**
- **$i = 27,93$**
- **input speed: 800 min⁻¹**



Gearbox for rolling-mills



- Weight: 37 215 kg
- IN-put: 3 800 kW
- $i = 1$
- input speed: 70 min^{-1}



- Weight: 68 505 kg
- IN-put: 2 x 470 kW
- $i = 35,77$
- input speed : 1 080 min^{-1}

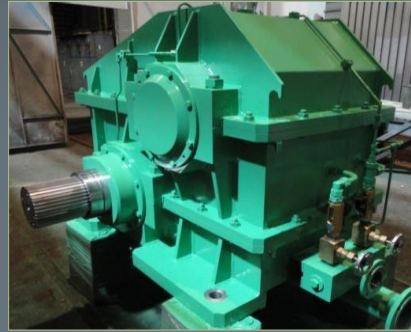
Gearbox for mining and energy

- Excavator, Raw material stacker
- Coal preparation plants



Special gearboxes

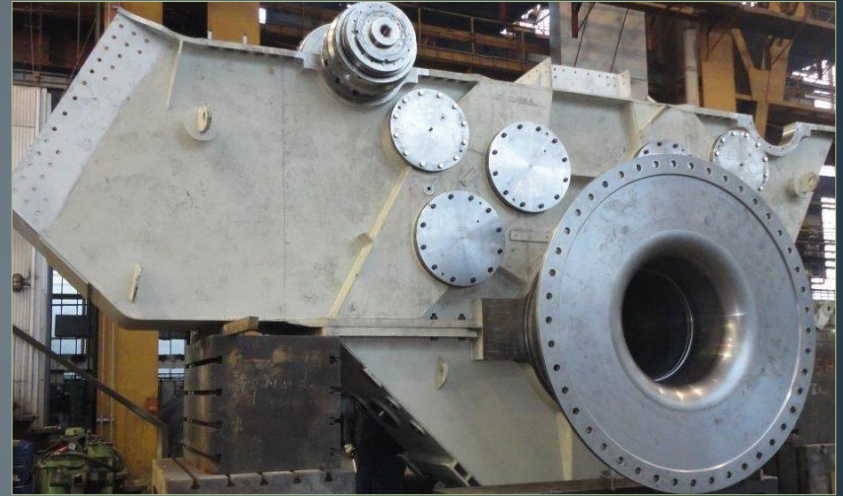
- Cement industry
- Marine
- Chemical industry
- Cranes
- Machine drives
- Customer demand



Spur-bevel gearboxes



- **Weight: 380 kg**
- **IN-put: 4 kW**
- **$i = 276,4$**
- **produced Nr: 16 +18**



- **Weight: 83 910 kg**
- **Power: 2 x 1 000 kW (long-term use)**
- **Power: 2 x 2 400 kW (short-term use)**
- **$i = 213,36$**
- **input speed: 99min^{-1}**

Gear production



GEAR WHEELS – RING GEARS - GEAR SHAFTS – PINION GEARS – CHAIN GEARS

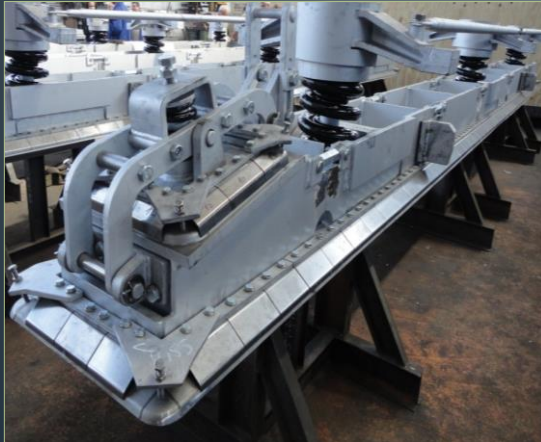


Gear pinions for jack-up system



Special machinery equipment

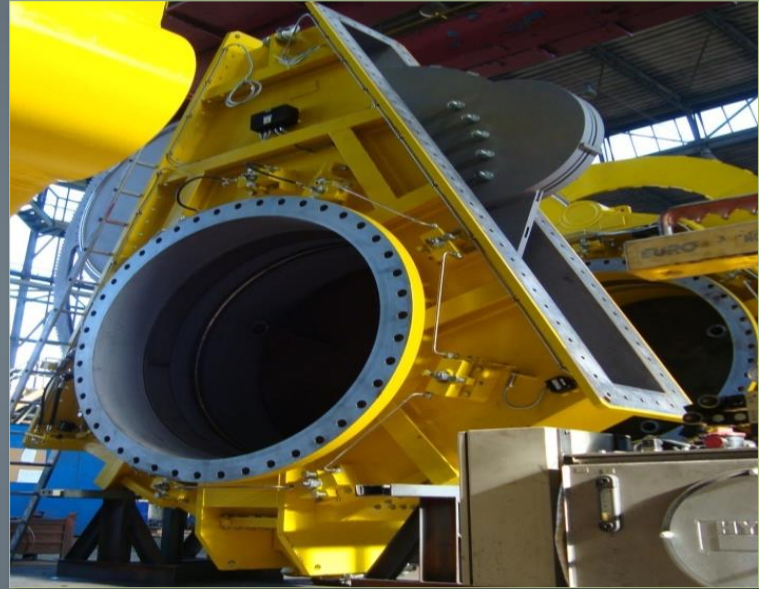
- Metallurgy
- Coal plants
- Marine
- Clutches



Special machinery equipment



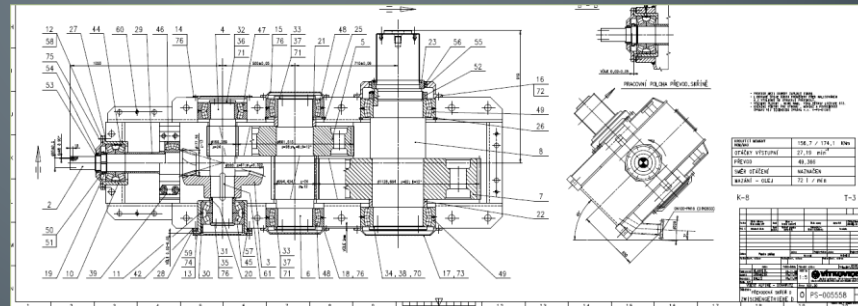
Heavy industry manipulators



Blast furnace equipment

Gearworks jobs

- Engineering and design
- Gearbox repairs
- Gear grinding
- Heat treatment
- Welding



MAZAK INTEGREX 420



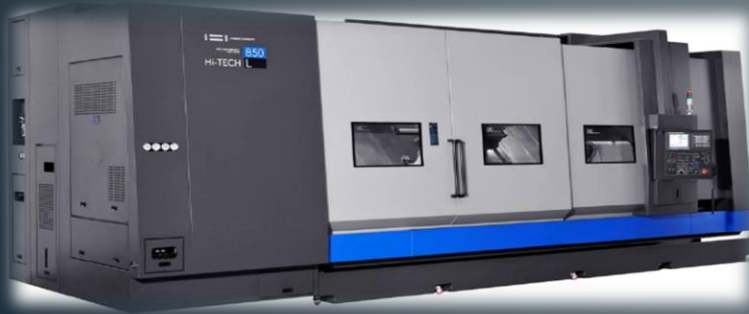
Multi funct. turning-milling center

- 2 spindles
- 5 axis, 40 tools
- workpiece weight - 1 t
- Machining length - 3000mm

HWACHEON Hi-Tech 850L YMC

extra-large horizontal turning center
32" Chucker with Y-axis

- max. length – 3 500 mm; 5 axis
- max. workpiece weight – 4 t
- length of the boring bar – 800 mm

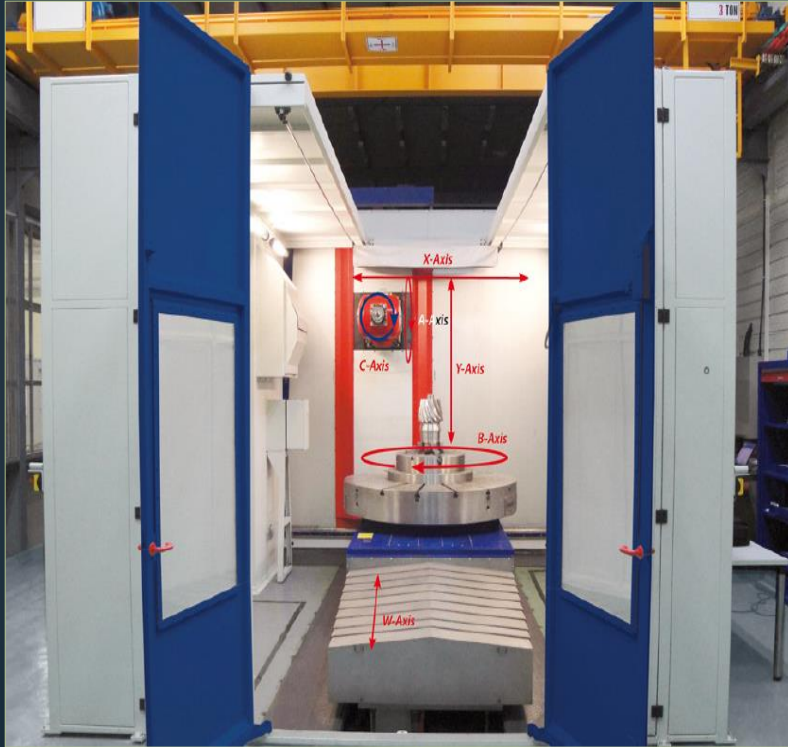


GLEASON PFAUTER P4000

- Diameter 4000 mm
- Quality grade of gearing 7
- Workpiece weight - 50 t
- Nominal module - 35



DEPO XPERT H 1212



- Diameter 3000 mm
- 7-axis machine
- Workpiece weight - 30 t
- Nominal module - unlimited



MONOCARB 3500

case hardening furnace

- max. diameter – 3,5 m
- max. depth – 2 m
- max. workpiece weight – 30 t
- cementation to a depth – 5 mm
- Temperature – 1 000°C
- Quenching bath – max. workpiece weight – 30 t, oil



- Quality management EN ISO 9001:2008
- Welding certificate 3834-2
- Steel construction EN 1090 – 1,2
DIN 18800/7



Customer references

VÍTKOVICE | **STEEL**



SIEMENS



voestalpine
EINEN SCHRITT VORAUSS



Thanks for watching

GEARWORKS, a. s.
Vítkovice 1141
703 00 Ostrava
Czech Republic