

 **Geotra**



DSP Přerov, spol. s r.o.  
významný výrobce strojů a zařízení, dodávající stroje, technologické uzly  
a investiční celky pro zpracování nerostných surovin.



[www.dspprerov.cz](http://www.dspprerov.cz)

DSP Přerov spol. s r.o., Kojetínská 2900/51, 750 02, Přerov  
Tel. +420 581 209 050, E-mail: [dsp@dspprerov.cz](mailto:dsp@dspprerov.cz)  
Czech Republic

BRANT (Czech Republic) – Porphyrite processing plant 170 tph





PITKYARANTA (Russia) – Granite/amphibolite processing plant 500 tph



ASBEST (Russia) – Peridotite/serpentinite processing plant 650 tph





NIZHNY NOVGOROD (Russia) – Dolomite processing plant 400 tph







NIGERIA – Portable laterite processing plant 25 tph



**KRASNOTURYINSK (Russia) – Portable limestone processing plant 120 tph**  
- SCU 95x70, SCU 9, VTK 160x500/3



AB KLOVAINIU SKALDA (Lithuania) – Dolomite processing plant 235 tph











AB KLOVAINIU SKALDA (Lithuania) – Granite processing plant 100 tph





AB KLOVAINIU SKALDA (Lithuania) – Sorting plant 150 tph



KÁMEN ZBRASLAV (Czech Republic) – Splilite processing plant 250 tph



ZAPORIZHIA (Ukraine) – Slag processing plant 200 tph



LJASKELJA (Russia) – Granite processing plant 270 tph



ALCHO (Russia) – Diorite processing plant 200 tph













SOLY (Belarus) – Portable granite processing plant 45 tph



**ASTRAVIEC (Belarus) – Gravel sand processing plant 130 tph**  
- VTK 160x500/2, KD 3000-100



**DRĄSEIKIŲ KARJERAS (Lithuania) – Gravel sand processing plant 130 tph**  
- VTK 160x500/2, SCU HIC 85x50, KDŠ 3000-80



MIŠKINIŲ KARJERAS (Lithuania) – Gravel sand processing plant 250 tph





MAYKOP (Russia) – Gravel sand processing plant 200 tph



MAYKOP 2 (Russia) – Gravel sand processing plant 250 tph





GROZNYJ (Chechnya) – Gravel sand processing plant - HCC 12/65, VTK 200x500/3



**LIPOVEC (Slovakia) – Gravel sand processing plant 100 tph**

- VTG 100x200, DC 75x50 T, VTK 160x500/2, VTK 200x700/2, VTK 200x500/2, HCC 12/65, LW 105x550, KDŠ 3000-80







BUČNÍK (Czech Republic) - Portable crushing unit SCU 9 with cone crusher HCC 9/125



OMICE (Czech Republic) – Mobile cone crusher MCU 7 C



PODGORICA (Montenegro) – Mobile cone crusher MCU 7 W



**GEOMIX. SP. Z O.O. (Poland) – Gravelsand processing plant 300 tph**





Saudi Arabia – Cone crushers HCU 12S and HCU 12



Norway – Cone Crusher HCU 7S and HCU 7



Trummer Maschinenhandel Aufbereitung GmbH. (Austria) – cone crusher HCU 7/160



"LASER-tech" – gravelsand pit (Poland) – cone crusher HCU 7/100



"Beton - Stal Ostrołęka" Sp. z o.o. – gravelsand pit (Poland) – cone crusher HCU 7/100



P.T.H.U Matuszek sp. Jawna – gravelsand pit Buków (Poland) – cone crusher HCU 7/100



M-Silnice a.s. Hradec Králové – quarry Stašov (Czech Republic) – cone crusher HCU 9/250



M-Silnice a.s. Hradec Králové – quarry Žumberk (Czech Republic) – cone crusher HCU 9/250



M-Silnice a.s. Hradec Králové – quarry Mastý (Czech Republic) – cone crusher HCU 10/65



Granita s.r.o. Skuteč – quarry Litická (Czech Republic) – cone crusher HCU 10/90



Granita s.r.o. Skuteč – quarry Chvaletice (Czech Republic) – cone crusher HCU 10/90



Granita s.r.o. Skuteč – quarry Chvaletice (Czech Republic) – cone crusher HCU 12 S



Granita s.r.o. Skuteč – quarry Chvaletice – cone crusher HCU 7/65





MLADOVICE (Czech Republic) – cone crusher HCU 10/65



ALAGIR (North Ossetia-Alania, Russia) – cone crushers HCU 10/220 and HCU 12/65



KIROVOHRAD (Ukraine) – cone crusher HCU 7/65



## Hydraulic cone crusher - series HCC 7, 9, 12



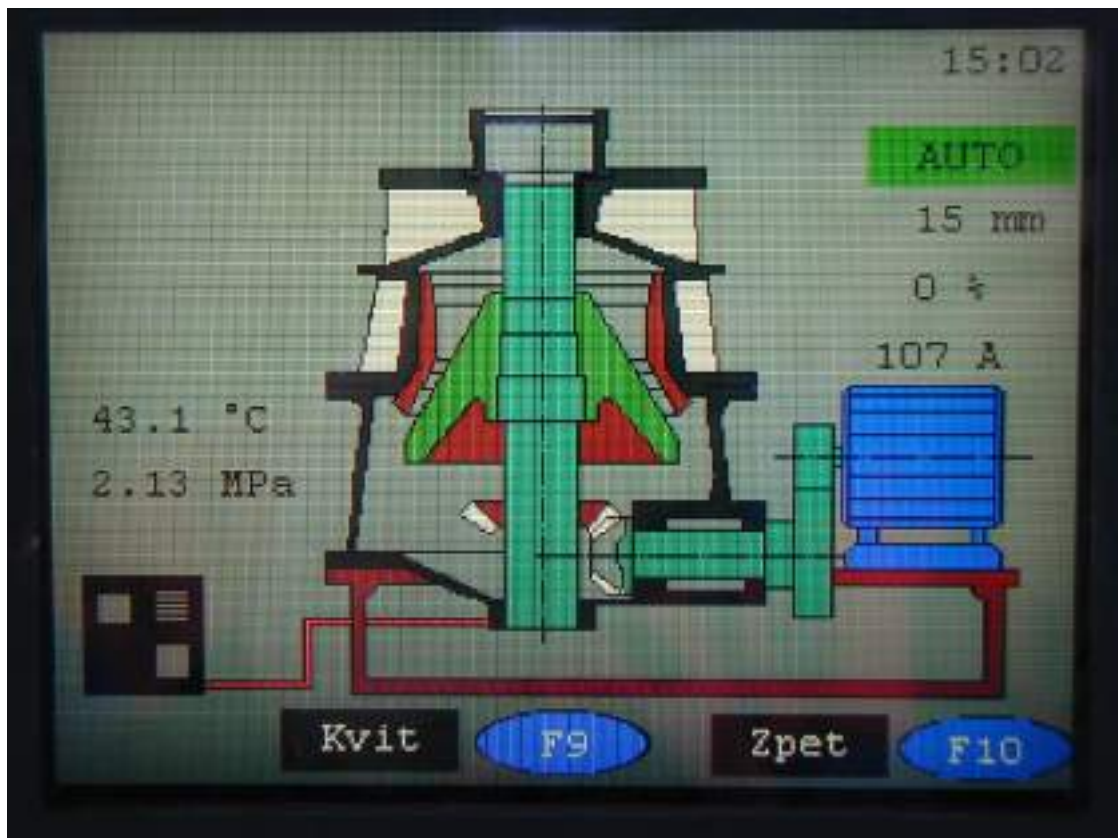
Hydraulic cone crusher - series HCU 7, 9, 10, 12

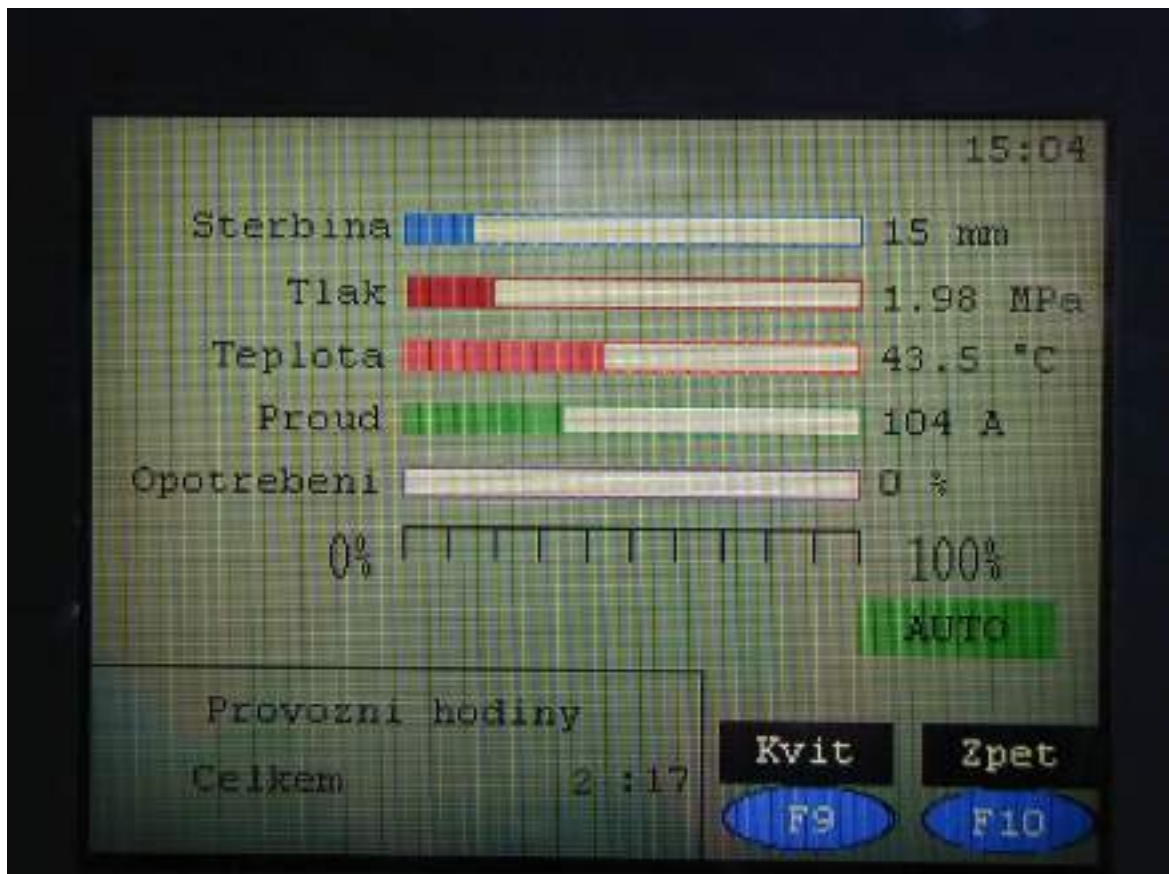


## Hydraulic and lubrication unit of cone crusher HCC/HCU



## Control automation with panel view for cone crushers HCC/HCU







LESOSIBIRSK (Russia) - Mobile jaw crusher MCU 75x50 C



SAINT PETERSBURG (Russia) – Container crushing unit CSCU 75x50 with jaw crusher



**VELENJE (Slovenia) – Container crushing unit CSCU HIC 85x50**  
- building waste processing



**KALCIT s.r.o. Brno – quarry Líšeň (Czech Republic) – limestone processing – VSI crusher VIC 80**



**Kopalnia chalcedonitu - CRUSIL Sp. z o.o – Inowłódz (Poland) – DC 85x50, VGO 120x270/2**



**BŘIDLICOVÝ DŮL RADIM a.s. (Czech Republic) – SCU 75x50, VTK 120x400/3**



**M-Silnice a.s. Hradec Králové – quarry Mastý (Czech Republic) – DC 105x80, VGO 120x270/2**



**BILIMBAY (Russia) – primary crushing unit with horizontal impact crusher HIC 125x130**



BUČNÍK (Czech Republic) – Portable crushing unit with jaw crusher DCD 1000 x 800



KÁMEN ZBRASLAV (Czech Republic) – Portable crushing unit with jaw crusher DC 105 x 80 S



Philippines – Gravel processing plant





Nigeria – laterite processing plant 25 tph



KAUNAS (Lithuania) - Portable crushing unit SCU DCD 500 x 400



Double toggle jaw crusher DCD 540 x 400 R



KOVOHUTY, a. s. Krompachy (Slovakia) - Double toggle jaw crusher DCD 500 x 400



Single toggle jaw crusher DC 75 x 50 T



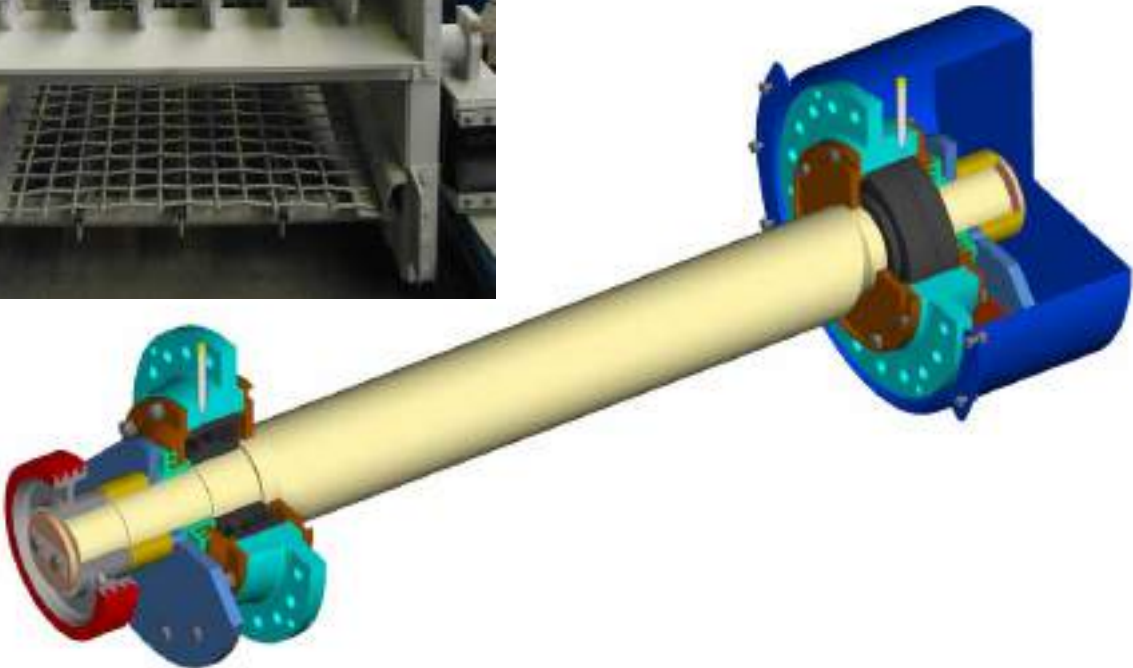
Horizontal shaft impact crusher HIC 85 x 100



BĚSTOVICE (Czech Republic) – VTE 120 x 300/2



VIBRATING SCREEN VGO 120 x 270/2



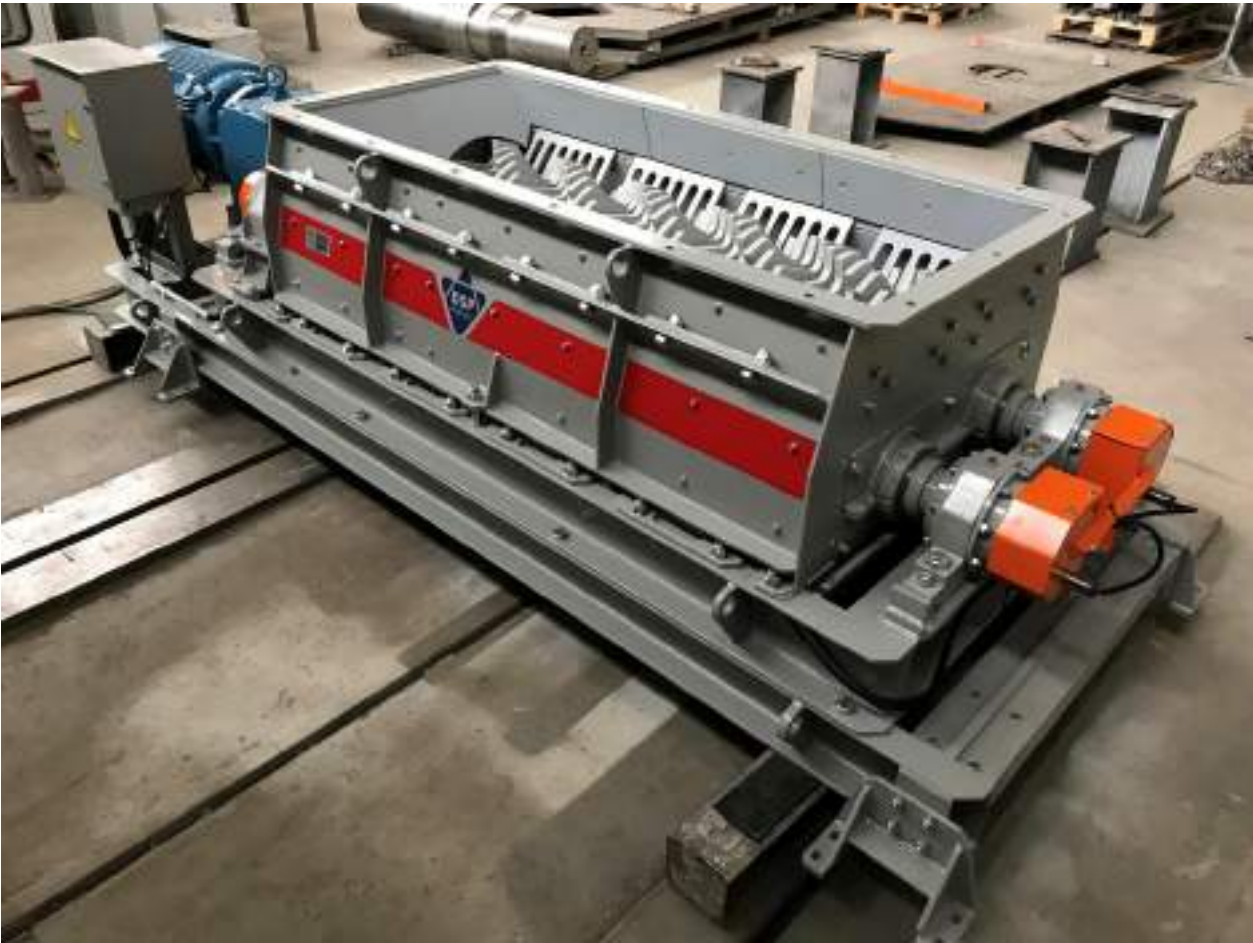
LOG WASHER LW 105x550







DOUBLE ROLL CRUSHER RCT 46x160 A



DOUBLE ROLL CRUSHER RCS 100x63

